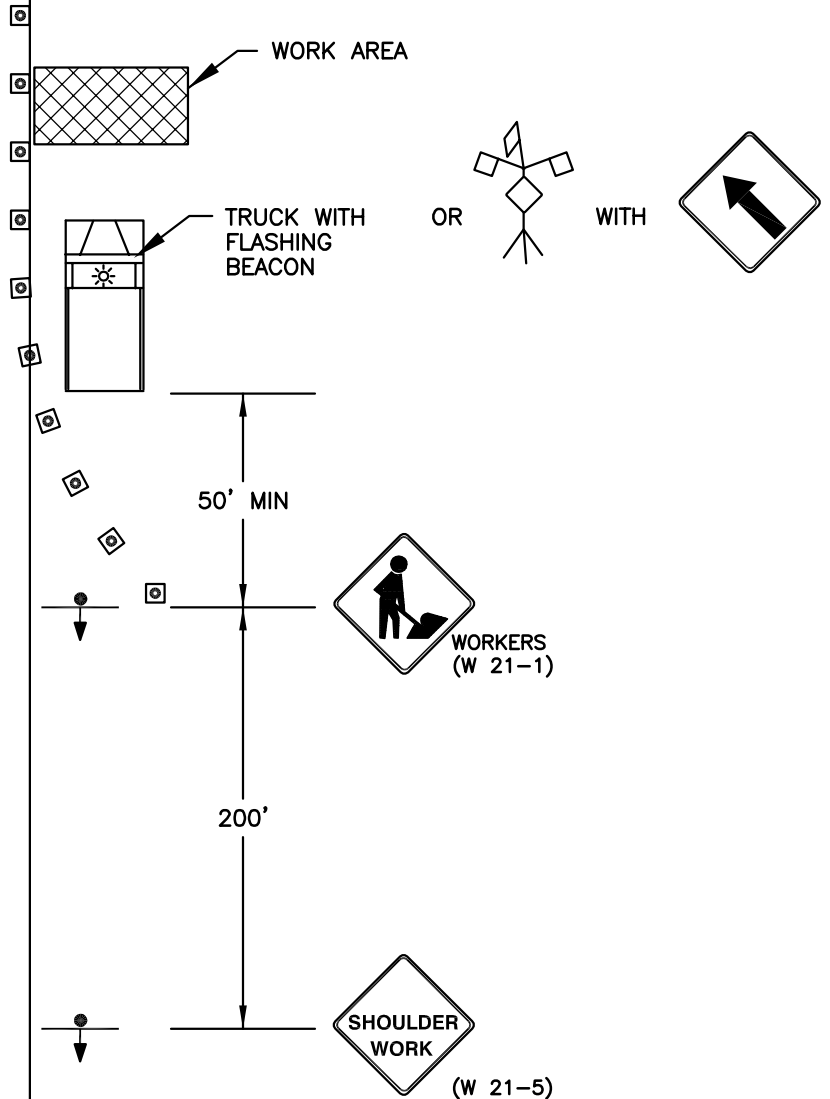


NOTE:

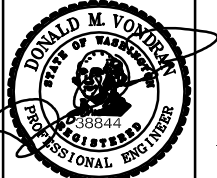
- FLASHING BEACON SHALL BE INSTALLED AT EACH SIGN FOR NIGHT-TIME USE.
- DISTANCES MAY VARY AS APPROVED BY THE CITY ENGINEER.
- FLAGGERS REQUIRED TO CONTROL TRAFFIC WHENEVER THE CONTRACTOR MUST INTERRUPT TRAFFIC FLOW TO ACCESS THE WORK SITE WITH MATERIALS OR EQUIPMENT.
- SIGN SIZE PER MUTCD.

LEGEND:

⊙ CONE OR CHANNELIZING DEVICE (SEE STANDARD DETAIL 913)



City of Covington
Public Works
Community Development



**TRAFFIC CONTROL PLAN
SHOULDER WORK**

This document has been signed electronically in accordance with WAC 196-23-070 and Chapter 19.34 RCW. Unauthorized alteration of any of the information on this document will invalidate the document, my certification and signature.

901

Revision Date
January 2010