

TABLE A

SPEED (MPH)	TAPER LENGTH (FT)		CONE SPACING ALONG TAPER (FT)
	OFFSET WIDTH		
	10'	12'	
25	105	125	25
30	150	180	30
35	205	245	35
40	270	320	40
45	450	540	45

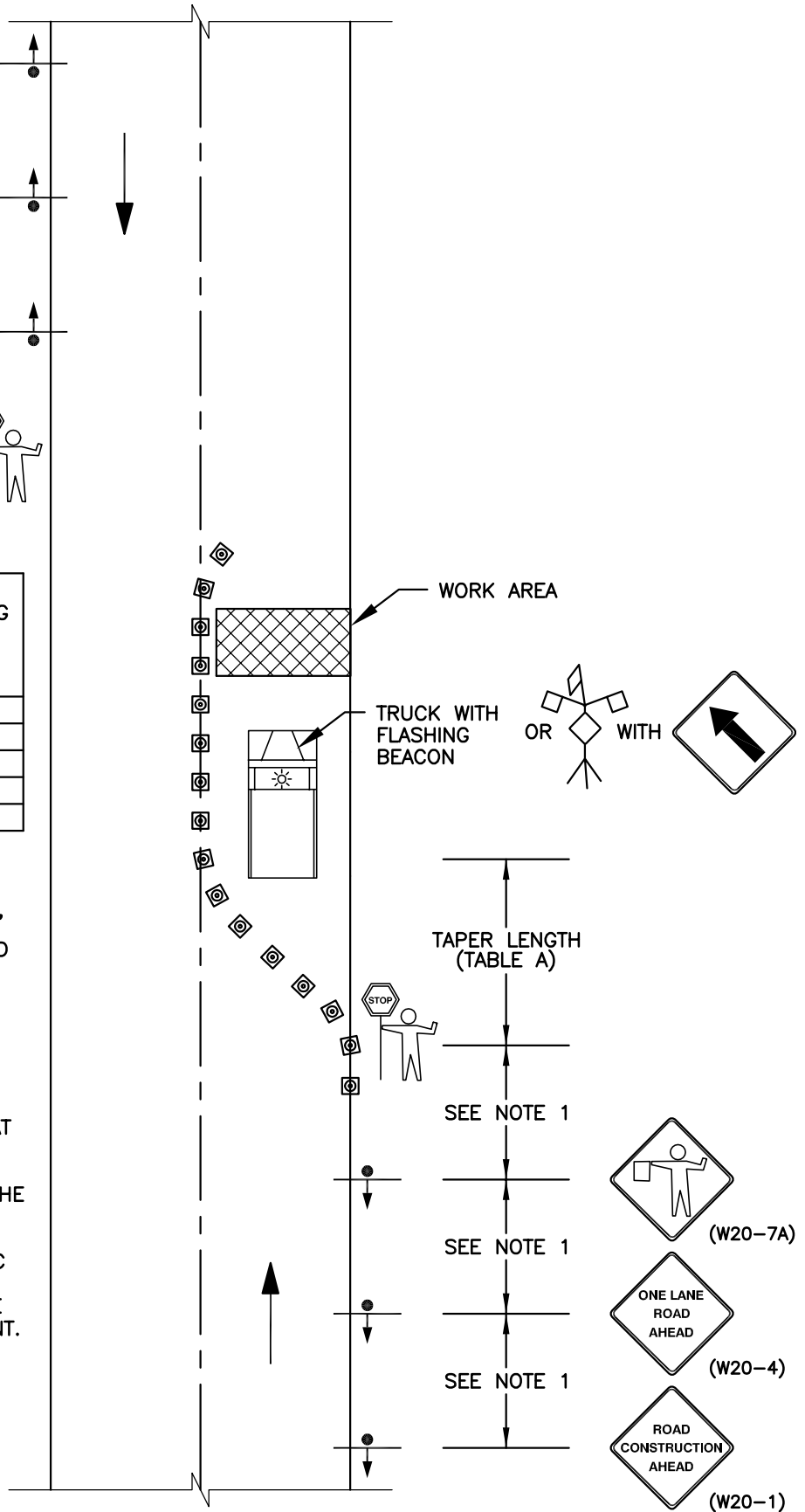
NOTE:

1 DISTANCE BETWEEN SIGNS SHALL BE 100' FOR RESIDENTIAL STREETS (25 MPH), AND 200' FOR ARTERIAL ROADWAYS

LEGEND:

- FLASHING BEACON SHALL BE INSTALLED AT EACH SIGN FOR NIGHT-TIME USE.
- DISTANCES MAY VARY AS APPROVED BY THE CITY ENGINEER.
- FLAGGERS REQUIRED TO CONTROL TRAFFIC WHENEVER THE CONTRACTOR MUST INTERRUPT TRAFFIC FLOW TO ACCESS THE WORK SITE WITH MATERIALS OR EQUIPMENT.
- SIGN SIZE PER MUTCD.

⊗ CONE OR CHANNELIZING DEVICE (SEE STANDARD DETAIL 913)



City of Covington
Public Works
Community Development

DONALD M. VONDRA
STATE OF WASHINGTON
PROFESSIONAL ENGINEER
38844

TRAFFIC CONTROL PLAN
2-LANE STREET
ONE LANE CLOSED

This document has been signed electronically in accordance with WAC 196-23-070 and Chapter 19.34 RCW. Unauthorized alteration of any of the information on this document will invalidate the document, my certification and signature.

903

Revision Date
January 2010