

LEGEND:

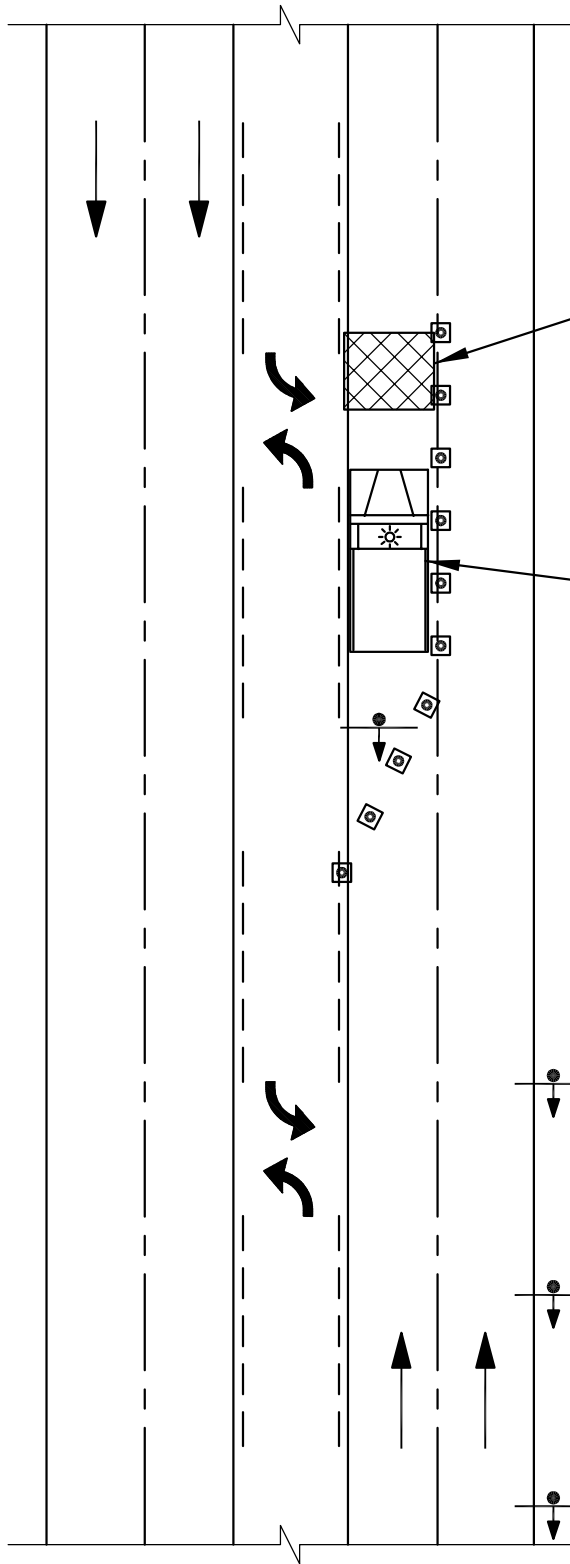
☐ CONE OR CHANNELIZING DEVICE (SEE STANDARD DETAIL 913)

NOTE:

- FLASHING BEACON SHALL BE INSTALLED AT EACH SIGN FOR NIGHT-TIME USE.
- DISTANCES MAY VARY AS APPROVED BY THE CITY ENGINEER.
- FLAGGERS REQUIRED TO CONTROL TRAFFIC WHENEVER THE CONTRACTOR MUST INTERRUPT TRAFFIC FLOW TO ACCESS THE WORK SITE WITH MATERIALS OR EQUIPMENT.
- SIGN SIZE PER MUTCD.

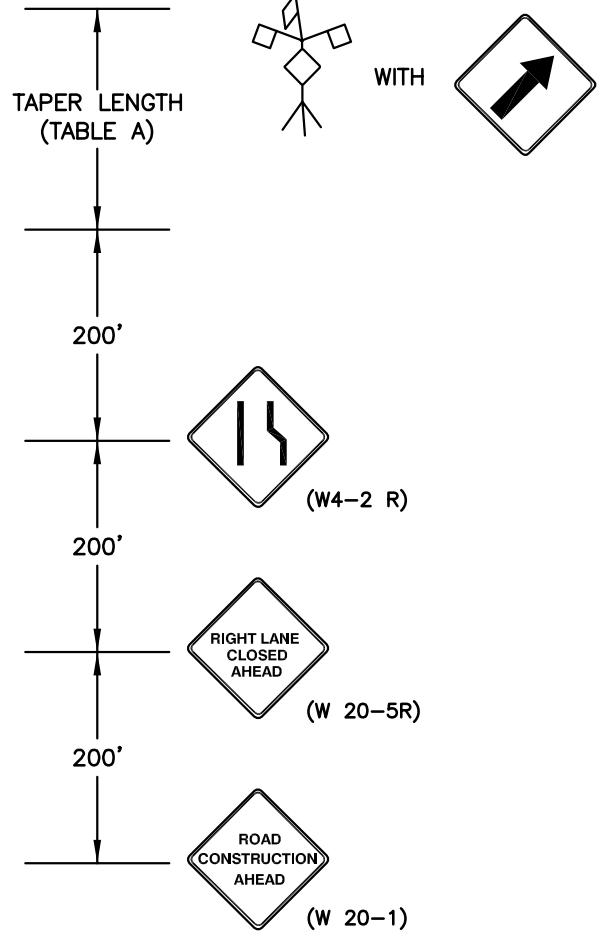
TABLE A

SPEED (MPH)	TAPER LENGTH (FT)		CONE SPACING ALONG TAPER (FT)
	OFFSET WIDTH		
	10'	12'	
25	105	125	25
30	150	180	30
35	205	245	35
40	270	320	40
45	450	540	45

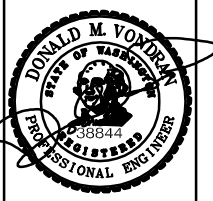


WORK AREA

TRUCK WITH FLASHING BEACON



City of Covington
Public Works
Community Development



**TRAFFIC CONTROL PLAN
5-LANE STREET
LEFT LANE CLOSED**

This document has been signed electronically in accordance with WAC 196-23-070 and Chapter 19.34 RCW. Unauthorized alteration of any of the information on this document will invalidate the document, my certification and signature.

905
Revision Date
January 2010