

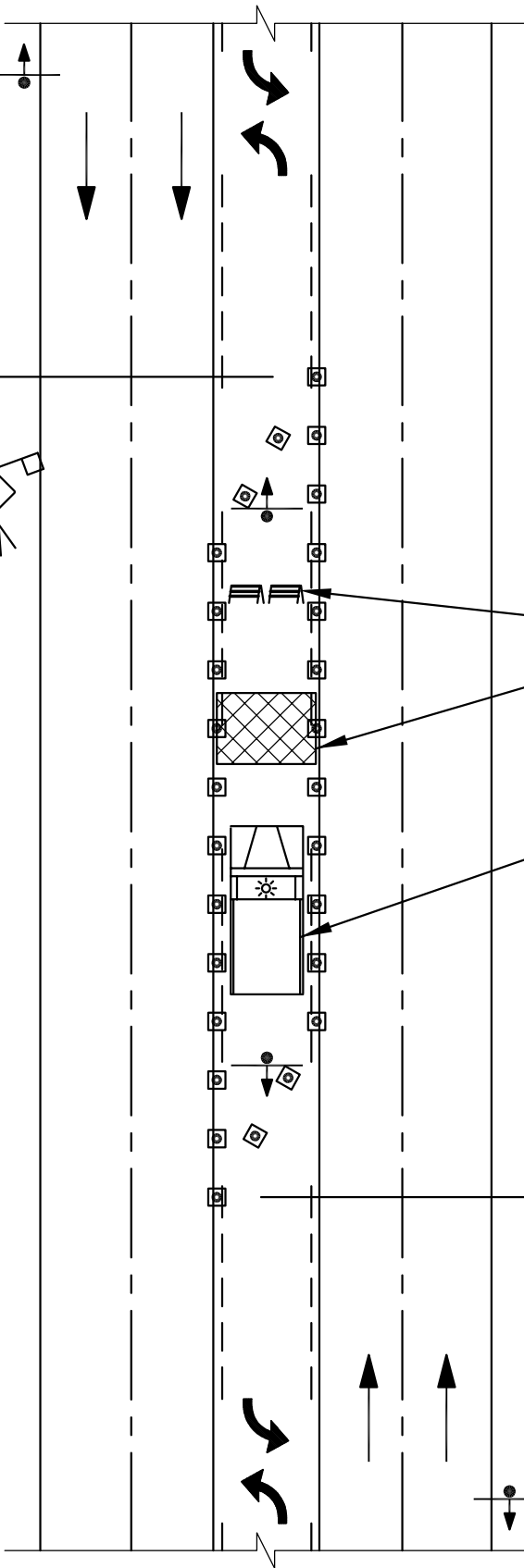


(W 20-1)

200'



WITH



NOTE:

- FLASHING BEACON SHALL BE INSTALLED AT EACH SIGN FOR NIGHT-TIME USE.
- DISTANCES MAY VARY AS APPROVED BY THE CITY ENGINEER.
- FLAGGERS REQUIRED TO CONTROL TRAFFIC WHENEVER THE CONTRACTOR MUST INTERRUPT TRAFFIC FLOW TO ACCESS THE WORK SITE WITH MATERIALS OR EQUIPMENT.
- SIGN SIZE PER MUTCD.

LEGEND:

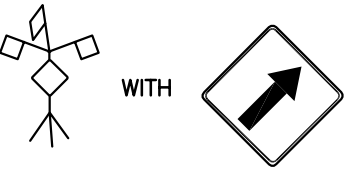
☐ CONE OR CHANNELIZING DEVICE (SEE STANDARD DETAIL 913)

TYPE 2 BARRICADES

WORK AREA

TRUCK WITH FLASHING BEACON

WITH



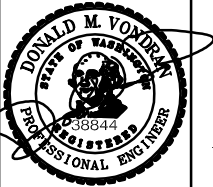
200'



(W 20-1)



City of Covington
Public Works
Community Development



TRAFFIC CONTROL PLAN
TWO-WAY LEFT
TURN LANE CLOSED

This document has been signed electronically in accordance with WAC 196-23-070 and Chapter 19.34 RCW. Unauthorized alteration of any of the information on this document will invalidate the document, my certification and signature.

906

Revision Date
January 2010